

# PLM for Medical Devices Deployment

Unpublished work. © 2025 Siemens

This Documentation contains trade secrets or otherwise confidential information owned by Siemens Industry Software Inc. or its affiliates (collectively, "Siemens"), or its licensors. Access to and use of this Documentation is strictly limited as set forth in Customer's applicable agreement(s) with Siemens. This Documentation may not be copied, distributed, or otherwise disclosed by Customer without the express written permission of Siemens, and may not be used in any way not expressly authorized by Siemens.

This Documentation is for information and instruction purposes. Siemens reserves the right to make changes in specifications and other information contained in this Documentation without prior notice, and the reader should, in all cases, consult Siemens to determine whether any changes have been made.

No representation or other affirmation of fact contained in this publication shall be deemed to be a warranty or give rise to any liability of Siemens whatsoever.

If you have a signed license agreement with Siemens for the product with which this Documentation will be used, your use of this Documentation is subject to the scope of license and the software protection and security provisions of that agreement. If you do not have such a signed license agreement, your use is subject to the Siemens Universal Customer Agreement, which may be viewed at <https://www.sw.siemens.com/en-US/sw-terms/base/uca/>, as supplemented by the product specific terms which may be viewed at <https://www.sw.siemens.com/en-US/sw-terms/supplements/>.

SIEMENS MAKES NO WARRANTY OF ANY KIND WITH REGARD TO THIS DOCUMENTATION INCLUDING, BUT NOT LIMITED TO, THE IMPLIED WARRANTIES OF MERCHANTABILITY, FITNESS FOR A PARTICULAR PURPOSE, AND NON-INFRINGEMENT OF INTELLECTUAL PROPERTY. SIEMENS SHALL NOT BE LIABLE FOR ANY DIRECT, INDIRECT, INCIDENTAL, CONSEQUENTIAL OR PUNITIVE DAMAGES, LOST DATA OR PROFITS, EVEN IF SUCH DAMAGES WERE FORESEEABLE, ARISING OUT OF OR RELATED TO THIS DOCUMENTATION OR THE INFORMATION CONTAINED IN IT, EVEN IF SIEMENS HAS BEEN ADVISED OF THE POSSIBILITY OF SUCH DAMAGES.

**TRADEMARKS:** The trademarks, logos, and service marks (collectively, "Marks") used herein are the property of Siemens or other parties. No one is permitted to use these Marks without the prior written consent of Siemens or the owner of the Marks, as applicable. The use herein of third party Marks is not an attempt to indicate Siemens as a source of a product, but is intended to indicate a product from, or associated with, a particular third party. A list of Siemens' Marks may be viewed at: <https://www.plm.automation.siemens.com/global/en/legal/trademarks.html>. The registered trademark Linux® is used pursuant to a sublicense from LMI, the exclusive licensee of Linus Torvalds, owner of the mark on a world-wide basis.

## About Siemens Digital Industries Software

Siemens Digital Industries Software is a global leader in the growing field of product lifecycle management (PLM), manufacturing operations management (MOM), and electronic design automation (EDA) software, hardware, and services. Siemens works with more than 100,000 customers, leading the digitalization of their planning and manufacturing processes. At Siemens Digital Industries Software, we blur the boundaries between industry domains by integrating the virtual and physical, hardware and software, design and manufacturing worlds. With the rapid pace of innovation, digitalization is no longer tomorrow's idea. We take what the future promises tomorrow and make it real for our customers today. Where today meets tomorrow. Our culture encourages creativity, welcomes fresh thinking and focuses on growth, so our people, our business, and our customers can achieve their full potential.

Support Center: <https://support.sw.siemens.com>

Send Feedback on Documentation: [https://support.sw.siemens.com/doc\\_feedback\\_form](https://support.sw.siemens.com/doc_feedback_form)

# Table of Contents

---

- About PLM for Medical Devices ..... 1-1
- Prerequisites to deploy PLM for Medical Devices..... 2-1
- Get the required software package for installing PLM for Medical Devices.....3-1
- Add the software package to the Deployment Center software repository.....4-1
- Update Teamcenter with PLM for Medical Devices..... 5-1
- Verify the installation of PLM for Medical Devices..... 6-1



# 1. About PLM for Medical Devices



---

The PLM for Medical Devices solution from Teamcenter helps manufacturers of medical devices achieve and maintain the product quality through multidomain collaboration while ensuring regional regulatory compliance. For the planning and development of any medical device, the technical documentation that contains details about user needs, quality, standards, compliance, associated risks and hazards, and various tests associated with the device must be reviewed and approved by the relevant authorities through a workflow.

The solution can therefore be used to manage the technical documentation and submission quality for the design and development of medical devices.

For the users to perform these tasks, you as an administrator must install and configure the PLM for Medical Devices solution on Teamcenter.

## Where do I go from here?

 Business User	To manage the technical documentation and submission quality for any medical product development, see <a href="#">Using PLM for Medical Devices</a> .
 Administrator	
How do I plan the deployment of PLM for Medical Devices?	Before you begin with the deployment process, refer to the <a href="#">Planning the deployment of PLM for Medical Devices</a> topic for information about the appropriate components that are required for the deployment.
How do I install the PLM for Medical Devices solution?	Refer to the <a href="#">installation</a> steps to update your Teamcenter environment with PLM for Medical Devices.



## 2. Prerequisites to deploy PLM for Medical Devices

For deploying the PLM for Medical Devices solution, you must plan your deployment process and your environment setup. To install the solution, you require:

- **Deployment Center**

For information about the version of Deployment Center supported for your version of Teamcenter, refer to the Hardware and Software Certifications knowledge base article on Support Center.

To access the Hardware and Software Certifications for your version of Teamcenter:

1. On **Support Center**, navigate to **Teamcenter > Knowledge-Base > Hardware And Software Certifications**.
2. Under **Teamcenter Certifications and Information**, click the **Downloads for Teamcenter under Support White Papers** link to navigate to the Teamcenter certification version that you want to access.
3. On the **Support White Papers Certifications** page, click the file name relevant to your version of Teamcenter to access the supported platform matrix. For example, **Tc2412PlatformMatrix-2024-November-10.xlsx**.

For instructions on installing and using Deployment Center, see the Deployment Center — Usage documentation required for your version of Teamcenter on Support Center.

- **Teamcenter 2412**

Ensure that you have Teamcenter 2412 installed before you proceed to deploy PLM for Medical Devices. In addition, you must install the following applications in your existing Teamcenter environment based on the PLM for Medical Devices license:

License type	Required applications
PLM for Medical Devices X3	<p>Install the applications listed below in your existing Teamcenter environment:</p> <ul style="list-style-type: none"><li>◦ <b>Teamcenter Foundation</b></li><li>◦ <b>Active Workspace</b></li><li>◦ <b>Active Content Structure</b></li><li>◦ <b>Document Management</b></li><li>◦ <b>Markup</b></li><li>◦ <b>Engineering Views Active Workspace</b></li><li>◦ <b>Subscription</b></li><li>◦ <b>Reporting</b></li></ul>

License type	Required applications
	<ul style="list-style-type: none"> <li>◦ <b>Change Management on Active Workspace — Usage</b></li> </ul>
<p><b>PLM for Medical Devices X5</b></p>	<p>Install all applications listed for the PLM for Medical Devices X3 license and additional applications listed below:</p> <ul style="list-style-type: none"> <li>◦ <b>Requirements Management</b></li> <li>◦ <b>Parameter Management</b></li> <li>◦ <b>Hazard and Risk Assessment</b></li> <li>◦ <b>Systems Engineering</b></li> <li>◦ <b>DPV&amp;R</b></li> </ul>
<p><b>PLM for Medical Devices UDI Add-on X5 plus</b></p>	<p>Install all applications listed for the PLM for Medical Devices X3 and X5 license and additional applications listed below:</p> <ul style="list-style-type: none"> <li>◦ <b>Consumer Products and Retail Foundation</b></li> <li>◦ <b>Brand Management</b></li> <li>◦ <b>Packaging and Artwork</b></li> <li>◦ <b>Consumer Product Management</b></li> <li>◦ <b>Vendor Management</b></li> <li>◦ <b>Classification</b></li> </ul>

## 3. Get the required software package for installing PLM for Medical Devices

---

Contact the customer support to obtain the necessary software kit for installing PLM for Medical Devices on top of Teamcenter.

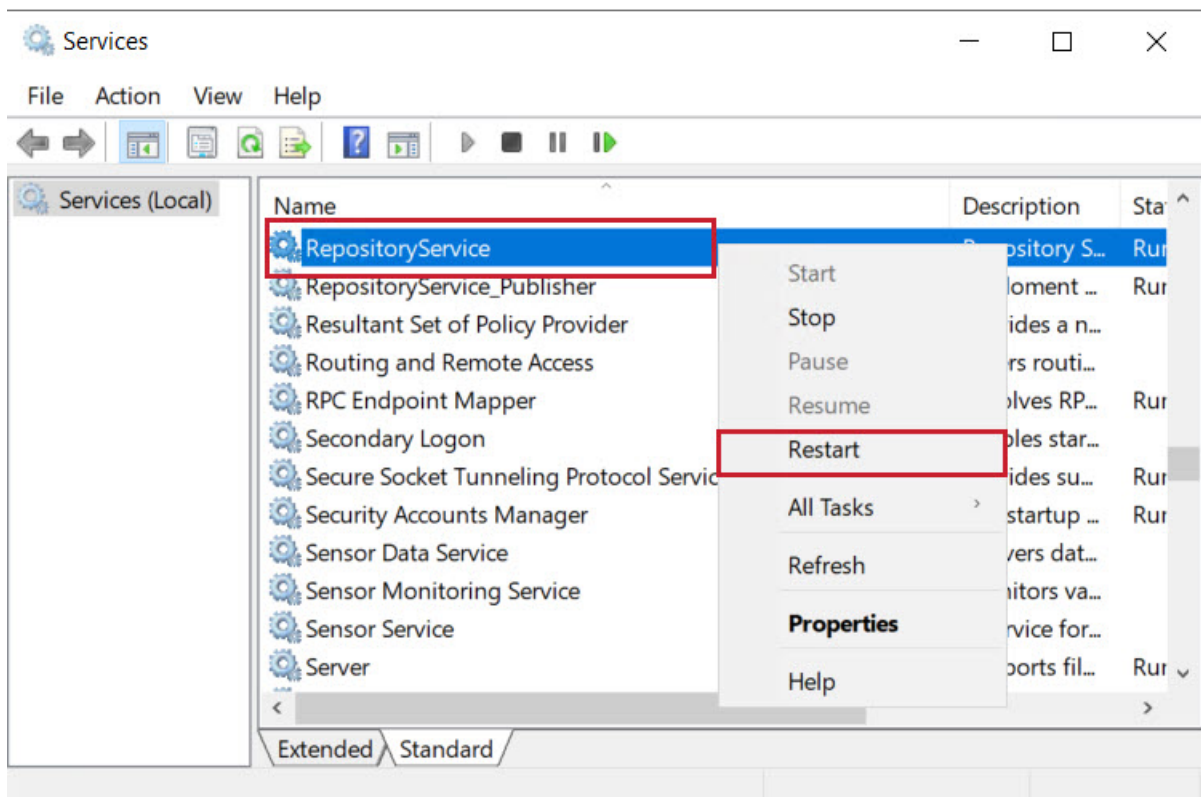


## 4. Add the software package to the Deployment Center software repository

For installing PLM for Medical Devices, you must add the Medical Devices software package to your environment.

### Procedure

1. **Unzip the software kit** you previously downloaded and copy the unzipped directories to the **software** subdirectory in the repository (<DC\_Install\_Folder>\Repo\software).
2. Open the Windows **Services** app. Restart **RepositoryService**. This ensures that the Medical Devices software kit you have copied gets listed in the **Software Repositories** page on Deployment Center.



3. Log on to Deployment Center, and click **SOFTWARE REPOSITORIES**.  
The **Software Repositories** page opens the **Contents** of the repository and displays the **Software Media** table.
4. Verify that *Medical Devices* is listed as one of the items in the table.



# 5. Update Teamcenter with PLM for Medical Devices

To add objects, workspaces, roles, workflows, and templates specific to the medical devices industry, you must update your Teamcenter environment with PLM for Medical Devices.

## Prerequisites

Before doing this, you must **download** and **add** the required software package to the Deployment Center software repository.

## Procedure

1. Log on to Deployment Center.
2. In the Deployment Center home page, click **Environments** and select the environment where you want to install PLM for Medical Devices.
3. In the **Software** task, click **Edit Selected Software** ⊕ to add software.
4. Select Medical Devices, and click **Update Selected Software** to add it to **Selected Software** list.
5. Go to **Applications** and click **Edit Selected Applications** ⊕.
6. In the **Available Applications** panel, select the following based on your PLM for Medical Devices license:

License type	Required applications
PLM for Medical Devices X3	<ul style="list-style-type: none"><li>• <b>Medical Devices</b><ul style="list-style-type: none"><li>◦ <b>Medical Devices Base</b></li><li>◦ <b>Medical Devices Best Practices</b></li><li>◦ <b>avaMedbaseSOA</b></li></ul></li></ul>
PLM for Medical Devices X5	Install all applications listed for the PLM for Medical Devices X3 license and additional applications listed below: <ul style="list-style-type: none"><li>• <b>Medical Device Foundation</b></li><li>• <b>Medical Device Foundation for Active Workspace</b></li></ul>
PLM for Medical Devices UDI Add-on X5 plus	Install all applications listed for the PLM for Medical Devices X3 and X5 license and additional applications listed below: <ul style="list-style-type: none"><li>• <b>Medical Device Submissions</b></li></ul>

License type	Required applications
	<ul style="list-style-type: none"> <li>• Teamcenter Integration for Label Management Systems</li> </ul>

### Tip

To locate the required application in the list, use **Ctrl + F** and type the application name.

- Click **Update Selected Applications** to add them to the **Selected Applications** list.
- In the **Deploy** panel, click **Generate Install Scripts**.

Deployment Center generates installation scripts and submits information about the scripts in the **Deploy Instructions** panel on the right. You can view the report about the deployment, including the location of the deployment scripts and the instructions for continuing the deployment.

- Copy `deploy_<hostname>.zip` from `<DC_Install_Folder>\Repo\deploy_scripts\config1\install<\<yyyymmddhhmmsstimezone>>` and extract its contents to the machine hosting Teamcenter.
- Run a command prompt window as an administrator and navigate to the location where you extracted the contents of the ZIP file.
- Run the **deploy.bat** (Windows) or **deploy.sh** (Linux) script.
  - For Windows:

```

deploy.bat -dcusername=<dcusername> -dcpassword=<dcpassword>
-softwareLocation=<DC_Install_Folder>\Repo\software

```

- For Linux:  
`deploy.sh`

<b>-dcusername</b>	User name for Deployment Center as defined when installing Deployment Center.
<b>-dcpassword</b>	Password for Deployment Center as defined when installing Deployment Center.
<b>-softwareLocation</b>	Location of the medical devices software kits in the <b>-softwareLocation</b> argument.

## Results

When the installation is complete, the command prompt returns a message indicating that the deployment was successful.



# 6. Verify the installation of PLM for Medical Devices

---

After installing PLM for Medical Devices, the Design History File (DHF) object, which is specific to the medical devices industry, is added to Teamcenter. The DHF object allows business users to manage the technical documentation associated with the design and development of a medical device.

To verify the addition of the DHF object type:

## Procedure

1. Log on to Active Workspace.
2. Navigate to and open a folder, for example, **Newstuff**.
3. Click **Add to** ⊕.
4. In the **Add** panel, in the list of available object types, verify that you see DHF.

# Add

Pin Panel

Close

New Palette Search

TYPE

RECENT

OTHER

DHF

 DHF

 DHF Master

 DHF Revision Master