



TEAMCENTER

Teamcenter Preferences

Teamcenter 2412

Unpublished work. © 2025 Siemens

This Documentation contains trade secrets or otherwise confidential information owned by Siemens Industry Software Inc. or its affiliates (collectively, "Siemens"), or its licensors. Access to and use of this Documentation is strictly limited as set forth in Customer's applicable agreement(s) with Siemens. This Documentation may not be copied, distributed, or otherwise disclosed by Customer without the express written permission of Siemens, and may not be used in any way not expressly authorized by Siemens.

This Documentation is for information and instruction purposes. Siemens reserves the right to make changes in specifications and other information contained in this Documentation without prior notice, and the reader should, in all cases, consult Siemens to determine whether any changes have been made.

No representation or other affirmation of fact contained in this Documentation shall be deemed to be a warranty or give rise to any liability of Siemens whatsoever.

If you have a signed license agreement with Siemens for the product with which this Documentation will be used, your use of this Documentation is subject to the scope of license and the software protection and security provisions of that agreement. If you do not have such a signed license agreement, your use is subject to the Siemens Universal Customer Agreement, which may be viewed at <https://www.sw.siemens.com/en-US/sw-terms/base/uca/>, as supplemented by the product specific terms which may be viewed at <https://www.sw.siemens.com/en-US/sw-terms/supplements/>.

SIEMENS MAKES NO WARRANTY OF ANY KIND WITH REGARD TO THIS DOCUMENTATION INCLUDING, BUT NOT LIMITED TO, THE IMPLIED WARRANTIES OF MERCHANTABILITY, FITNESS FOR A PARTICULAR PURPOSE, AND NON-INFRINGEMENT OF INTELLECTUAL PROPERTY. SIEMENS SHALL NOT BE LIABLE FOR ANY DIRECT, INDIRECT, INCIDENTAL, CONSEQUENTIAL OR PUNITIVE DAMAGES, LOST DATA OR PROFITS, EVEN IF SUCH DAMAGES WERE FORESEEABLE, ARISING OUT OF OR RELATED TO THIS DOCUMENTATION OR THE INFORMATION CONTAINED IN IT, EVEN IF SIEMENS HAS BEEN ADVISED OF THE POSSIBILITY OF SUCH DAMAGES.

TRADEMARKS: The trademarks, logos, and service marks (collectively, "Marks") used herein are the property of Siemens or other parties. No one is permitted to use these Marks without the prior written consent of Siemens or the owner of the Marks, as applicable. The use herein of third party Marks is not an attempt to indicate Siemens as a source of a product, but is intended to indicate a product from, or associated with, a particular third party. A list of Siemens' Marks may be viewed at: www.plm.automation.siemens.com/global/en/legal/trademarks.html. The registered trademark Linux® is used pursuant to a sublicense from LMI, the exclusive licensee of Linus Torvalds, owner of the mark on a world-wide basis.

About Siemens Digital Industries Software

Siemens Digital Industries Software is a global leader in the growing field of product lifecycle management (PLM), manufacturing operations management (MOM), and electronic design automation (EDA) software, hardware, and services. Siemens works with more than 100,000 customers, leading the digitalization of their planning and manufacturing processes. At Siemens Digital Industries Software, we blur the boundaries between industry domains by integrating the virtual and physical, hardware and software, design and manufacturing worlds. With the rapid pace of innovation, digitalization is no longer tomorrow's idea. We take what the future promises tomorrow and make it real for our customers today. Where today meets tomorrow. Our culture encourages creativity, welcomes fresh thinking and focuses on growth, so our people, our business, and our customers can achieve their full potential.

Support Center: support.sw.siemens.com

Send Feedback on Documentation: support.sw.siemens.com/doc_feedback_form

Contents

Getting familiar with preferences

Why do I need preferences?	1-1
How do preferences work?	1-1
How does Teamcenter retrieve preferences?	1-5
Who can make changes to preferences?	1-6
What are environment preferences?	1-7
An example of preference hierarchy	1-8
Where can I get a list of preferences?	1-12

Creating and editing preferences

Exporting, editing, and importing preferences	2-1
Working with preferences in the rich client	2-1
Working with preferences in Active Workspace	2-8
What if preference names change when imported?	2-12
Specify dual OS values for a single preference	2-13
Tips for defining preferences	2-14



1. Getting familiar with preferences

Why do I need preferences?

You can use Teamcenter preferences to control various aspects of Teamcenter's behavior and appearance.

Following are only a few examples of what preferences control:

- Whether or not live updates are allowed.
- Password requirements when not using LDAP.
- Which XML rendering template (XRT) to use.
- Which query to use as the default quick access query.



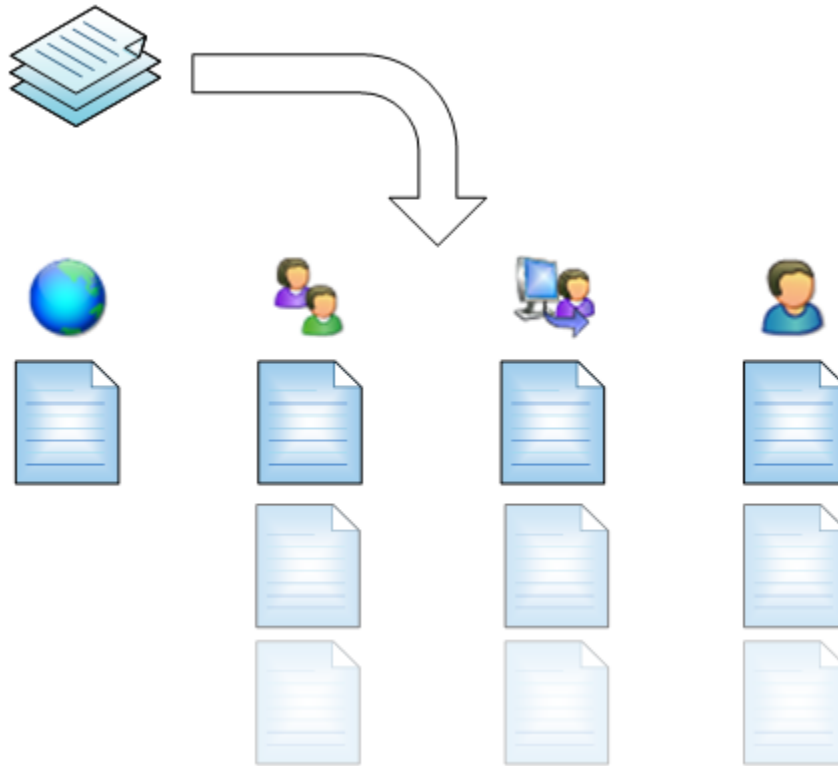
Siemens Digital Industries Software recommends browsing through the list of preferences to see which ones might be useful to you. Each preference's definition will document its use.

How do preferences work?

At their core, preferences are simply a way to store information. They are similar to environment variables, except that they operate with several layers of permissions.

Overview

Each preference consists of two major components, a definition and instances.



A preference *definition* along with all of its preference *instances* are together considered to be a preference.



Definition

The preference definition is like a blueprint. It defines the nature of the preference and is used to create the instances at the various locations. Even though it may define a default value, the definition itself is never retrieved or read as a preference. If there are no instances of this preference, there is no value.



Site

A preference instance created at the site location applies to everyone logged in to Teamcenter unless overridden. There can be only one site instance.



Group

Any preference instances created at the group location apply only to users who are currently logged in as that group, and they supersede site preferences. There can be one group instance created for each group.



Role

Any preference instances created at the role location apply only to users who are currently logged in as that role (regardless of group), and they supersede site and group preferences. There can be one role instance created for each role.



User

Any preference instances created at the user location apply only to that user, and they supersede site, group, and role preferences. There can be one user instance created for each user.

Preference definition

You use the preference definition to create the overall limits and restrictions on the preference as well as setting the default value. Think of this as an abstract template from which the preference itself will be instantiated. Following are the fields used to define a preference definition:

Name	The name of the preference. Naming patterns help organize the preferences and give an idea of what they do even before you read the description. See the list of existing preferences for examples.
Protection Scope	Determines where and by whom it can be instantiated.
Type	Specify the preference value type.
Multiple	Specify if this preference can hold multiple values.
Description	Explain the use of the preference. What does it control? What format is expected for the values? Etc.
Value	Specify the default value that an instance will contain when initially created.
Environment	Retrieve the value from an OS environment variable of the same name.
Category	Organize related preferences based on their category. There are many existing categories you can use, or you can create your own.

Preference instance

You create a preference instance from its definition. When you create a new instance of a preference it must belong to a location. This location specifies when it is active and its priority in the hierarchy. You cannot create a preference instance if the protection scope does not allow it.

When referring to preference instances, it is common to shorten the phrase. For example, the *preference instance in the Engineering group location* is commonly referred to as the *Engineering group preference*.

When you create a new preference, you specify two things:

Location	Locations are where the preference instances reside. You can create preference instances at the following locations: <ul style="list-style-type: none"> • User • Role • Group • Site / System
Value	You can keep the default value from the definition or specify a new one.

Preference locations

- **User**

This assigns the instance to a specific user. These are commonly the preferences that Teamcenter uses to track things like column widths in the rich client, or most recently searched text, for example.

Although you can control your active preferences like style sheet registration down to the user level, it is normally recommended that you keep those kinds of settings to the Group level or higher. It makes things easier when people move in and out of groups and roles.

- **Role**

You can control the behavior based on a user's role. This is handy for things such as style sheets. Keep the consumer's page simple while being able to provide the information the author or approver needs.

- **Group**

Similar to the **Role** location, you can control the behavior at the next step up, at the group level.

- **Site / System**

Preferences created at these locations apply to everyone. This is typically where you instantiate preferences that control system-wide behavior or default behavior that can be overridden at the group, role, or user level.

Site preferences only allow a single instance, but a dba can change the protection scope of a site preference to something else.

System preferences do not allow their protection scope to be changed, *even by a dba*. In all other ways, they behave like a site preference.

Caution:

An existing non-system preference may be changed into a system preference by a dba, but once it has been changed, it *cannot* be changed back. If you want to change it, it *must* be deleted and re-created.

Customer-facing preferences

You control an aspect of the UI or behavior directly by making changes to the preference. Examples of these preferences are configuring default paste relations, which style sheets are used in a given situation, or how the Dispatcher handles certain file types.

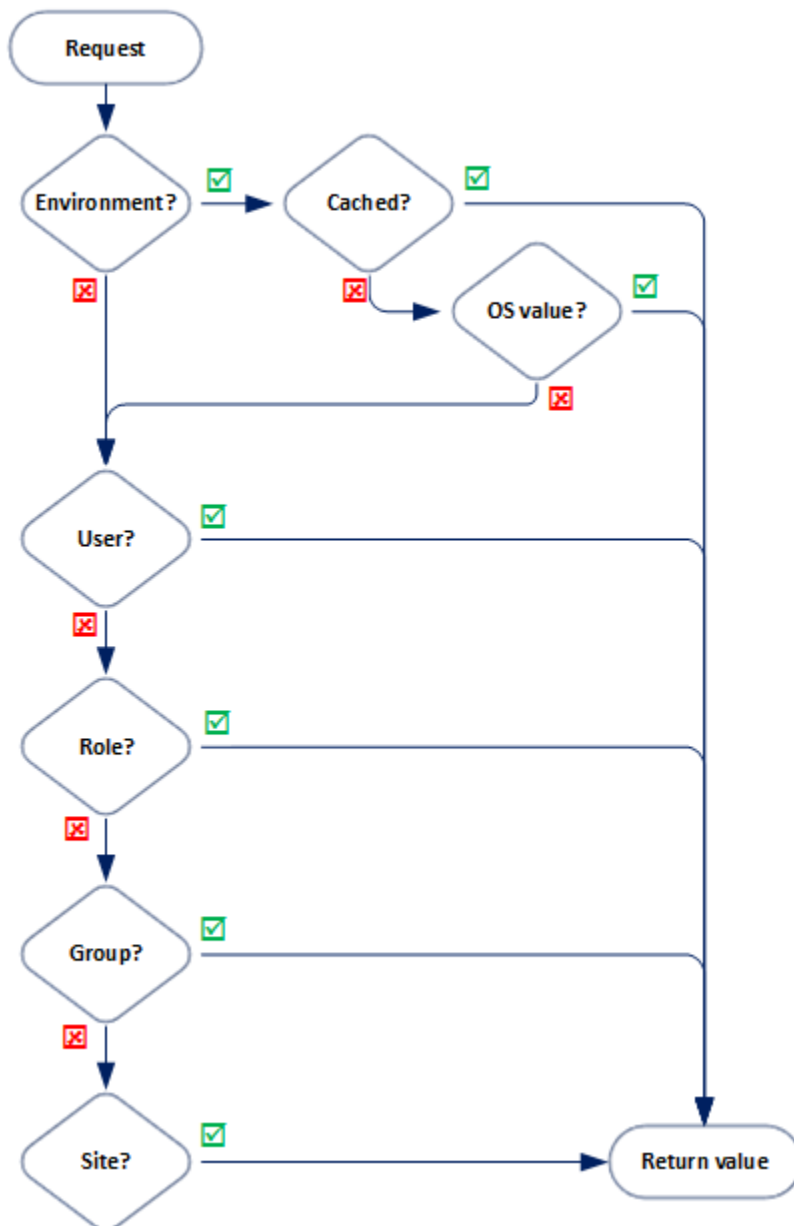
Internal preferences

Teamcenter uses preferences extensively to remember application parameters, like column width. Even though you can see and possibly modify the values of these preferences, it is not advised to do so.

How does Teamcenter retrieve preferences?

You might be interested to know how Teamcenter retrieves preference values, which can be useful in planning your overall strategy.

When a preference value is requested, Teamcenter performs the following steps to return a value:



1. If the preference is an **Environment** preference, **tcserver** checks the value of the OS environment variable of the same name.
If the environment variable exists, the value returned and cached for future requests.
2. If the preference is not an **Environment** preference, or if there was no OS value present, **tcserver** looks for a preference instance at the **User** location for the current user.
If it is found, it returns the value.
3. If **tcserver** has not returned a preference value yet, it looks for a preference instance at the **Role** location for the user's current role.
If it is found, it returns the value.
4. If **tcserver** has not returned a preference value yet, it looks for a preference instance at the **Group** location for the user's current group.
If it is found, it returns the value.
5. If **tcserver** has not returned a preference value yet, it returns the value of the preference instance at the **Site / System** location.

Who can make changes to preferences?

Because you would not want all users to have access to change important settings, you can control access to preferences based on the user's current group and role.

Protection scope

Use the preference's protection scope to control the level at which the preference can be created or modified. The protection scope allows anyone at that level or higher to make changes to the preference value. The priority is as follows:

	Any user	Group Administrator	dba
User	✓	✓	✓
Role		✓	✓
Group		✓	✓
Site / System			✓

Any user

Can create, modify, and delete their own User preference instances.

Group Administrator

Can create, modify, and delete the User preference instances of members of their group, as well as Group preference instances for their group and Role instances for any role in their group.

dba

Can create, modify, and delete all preferences at all locations.

Examples

- The **DocumentRevision.SUMMARYRENDERING** preference definition has a protection scope of **User**, and therefore allows preference instances to be created at any location.
- The **WRKFLW_show_user_assignment_options** preference definition, on the other hand, has a protection scope of **Group**, and cannot be created at the user or role locations. They can only be created at the group or site locations.
- The **BMF_CUSTOM_IMPLEMENTOR_PATH** preference definition has a protection scope of **Site**, and therefore allows only a site instance to be created.
- The **TC_PREFS_TO_HIDE** definition has a protection scope of **System**, and only allows a site instance to be created. However, unlike a preference with a site protection scope, this preference's protection scope cannot be changed.

What are environment preferences?

You can define a preference to retrieve its value from an environment variable in the operating system.

If you want to pass multiple values from the environment to the preference, you must configure the following:

- Set the preference's **Multiple** setting to **multiple**.
- Use the appropriate separator in the environment variable. The environment variable is read from the operating system on which the **tcserver** process is running.

Windows Semicolon — For example, `MyEnvPref=Value1;Value1;Value3`

Linux Comma — For example, `MyEnvPref=Value1,Value1,Value3`

The environment variable is only read by the **tcserver** process when the value is first requested, so any changes made to the environment variable after that will not be reflected in the Teamcenter preference until after the next time the **tcserver** process is started.

Remember, the environment variable is read from the environment where the **tcserver** process is running, which is not necessarily the environment where the client is running.

An example of preference hierarchy

Everything in this example is based on a single preference, one which registers a style sheet to a business object for the summary view. It could be any preference as all preferences behave the same way. Since this preference definition's protection scope is **User**, you can create instances at the **Site**, **Group**, **Role**, and **User** location. This means you can control its value based on your users' current group, role, or even user name.

Example: I want the summary view's property layout for item revisions to depend on my users' login information

Following are the details of this example.

- You have three groups: Engineering, Manufacturing, and Testing. Each group has three roles: Manager, Designer, and Viewer.
- You want a default style sheet that everyone will use unless otherwise specified.
- Your technical users need an extended set of properties.
- Your managers need a page of workflow information.
- Your designers need classification information.
- You have users that just need a simplified layout for viewing.
- You have Conner. Conner is a power-user. Conner needs a special layout regardless of which group or role he's in.

Style sheet datasets

Five style sheet datasets are considered.

ItemRevSummary

Configured to be the default style sheet for the Item Revision summary page. This applies to everyone unless overridden.

IRSumTech

Configured to provides the extra properties for the Engineering and Manufacturing groups, but not for any other groups.

IRSumMgr

Configured to display workflow information for the Manager role, regardless of group.

IRSumDes

Configured to show the classification trace for the Designer role, regardless of group.

ConnersIRSum

Configured for Conner. Conner has his own requirements

Preference instances

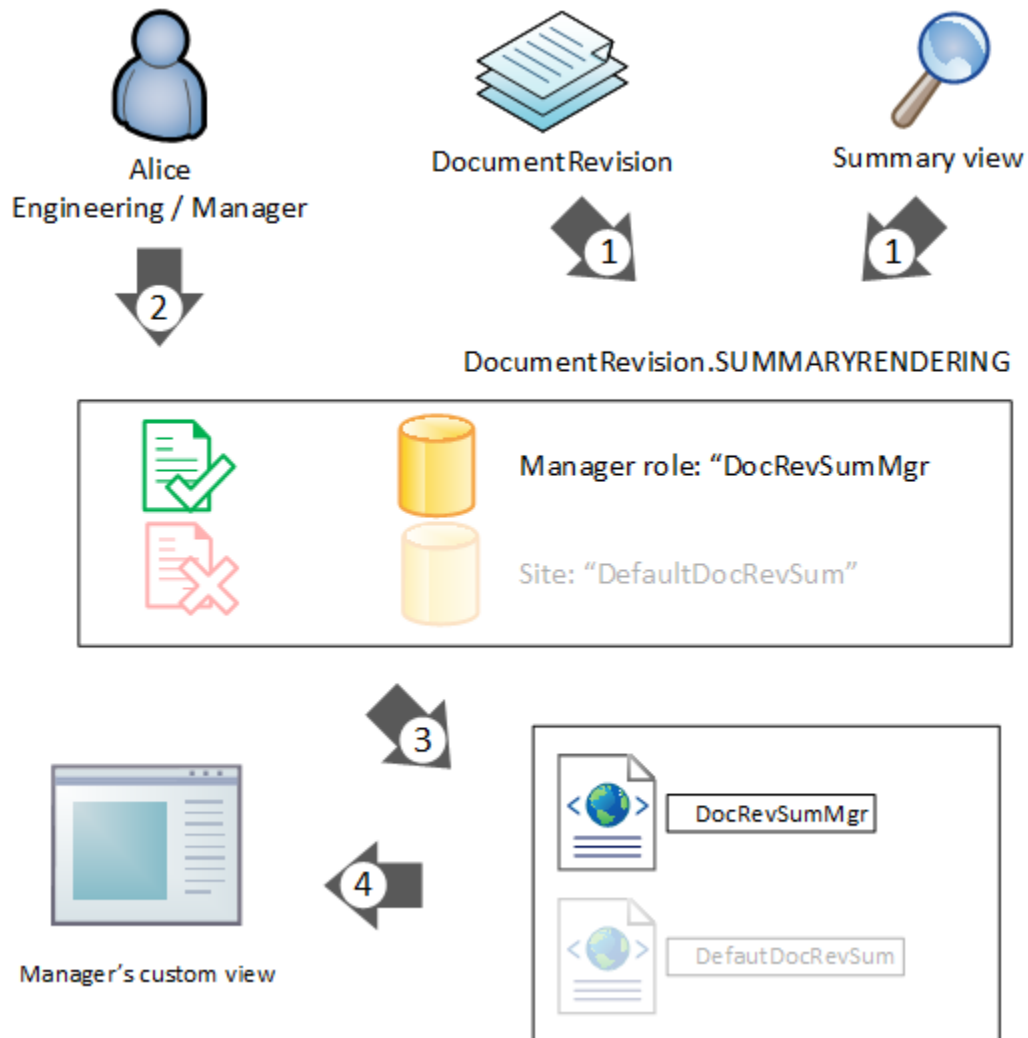
Assign the style sheets to the various groups and roles, and even users if desired, by creating each preference instance with the value pointing to the respective style sheet. In this example, there are 6 preference instances created.

User preferences	Conner: ConnersIRSum
Role preferences	Manager: IReSumMgr Designer: IReSumDes
Group preferences	Engineering: IReSumTech Manufacturing: IReSumTech
Site preference	<i>value:</i> ItemRevSum

The Viewer role and the Tester group have no preference instances created for their location.

How does Teamcenter choose which preference to use?

In this example, Alice selects a **DocumentRevision** business object and uses the **Summary** tab. When she does this, Teamcenter performs a few steps to determine which style sheet to use.



1. Based on the object type and the view location, the system knows the name of the preference instances to retrieve.

In this example, **DocumentRevision.SUMMARYRENDERING**.

There are two instances: one at the **Site** location, and one at the Manager **Role** location.

2. Based on the user's current session information, Teamcenter chooses the appropriate preference instance.

Less specific locations are overridden by more specific locations.

3. The value of the chosen preference instance is read, providing the name of the style sheet to retrieve.
4. Teamcenter uses the style sheet to render the view.

Result

Your users see a different set of information based on what group or role they are in because the client uses different style sheets.

User - Group / Role	Preference instance build-up	Resulting style sheet
Alice — Engineering / Manager	Alice: <i>none</i> Manager: IRSumMgr Engineering: IRSumTech Site: ItemRevSum	IRSumMgr
Ted — Manufacturing / Manager	Ted: <i>none</i> Manager: IRSumMgr Manufacturing: IRSumTech Site: ItemRevSum	IRSumMgr
Sue — Testing / Manager	Sue: <i>none</i> Manager: IRSumMgr Testing: <i>none</i> Site: ItemRevSum	IRSumMgr
Bob — Engineering / Designer	Bob: <i>none</i> Designer: IRSumDes Engineering: IRSumTech Site: ItemRevSum	IRSumDes
Carol — Engineering / Viewer	Carol: <i>none</i> Viewer: <i>none</i> Engineering: IRSumTech Site: ItemRevSum	IRSumTech
Pat — Testing / Viewer	Pat: <i>none</i> Viewer: <i>none</i> Testing: <i>none</i> Site: ItemRevSum	ItemRevSum
Conner — Engineering / Manager	Conner: ConnersIRSum Manager: IRSumMgr Engineering: IRSumTech Site: ItemRevSum	ConnersIRSum
Conner — Testing / Viewer	Conner: ConnersIRSum Viewer: <i>none</i> Testing: <i>none</i> Site: ItemRevSum	ConnersIRSum

- Alice sees the style sheet for Managers because she does not have a user preference set to supersede it. The site preference is overridden by the Engineering group preference, which is overridden by the Manager role preference. Ted has the same result; the Manufacturing group preference is overridden by the Manager preference. Sue doesn't have a group preference, but she still gets the Manager role preference.
- Bob sees the style sheet for Designers because of his role, similar to the preceding example.

- Carol sees the tech style sheet because there is no role preference for Viewers.
- Pat's group and role do not have preferences associated with them, and neither does she have a user preference, so she gets the default style sheet defined by the site preference.
- Conner gets Conner's style sheet regardless of which group or role he's in, since a user preference supersedes all others.

Where can I get a list of preferences?

There are several sources from which to retrieve a list of preferences and their definitions.

Administration data report

You can find the **Administration Data Report** in the **References for Administrators and Customizers** in the Teamcenter section of Support Center. In this report, you will find a complete list of all preferences shipped with Teamcenter. When you install additional features, like Dispatcher, NX Integration, 4th Generation Design, and so on, additional preferences will be added to your site. To get the most accurate and up-to-date listing of preferences contained in your site, you must create your own Administration Data Documentation report.

Rich client

You can use the various tabs of the rich client's **Edit→Options** menu to interact directly with preferences, including a report of which preferences have changed since installation.

Raw XML export

You can produce an XML file containing preference information using the **preferences_manager** utility.

2. Creating and editing preferences

Exporting, editing, and importing preferences

You can manually edit preference XML files to create or modify a preference, and then use the **preferences_manager** utility to load the XML files, or use the rich client to import the files.

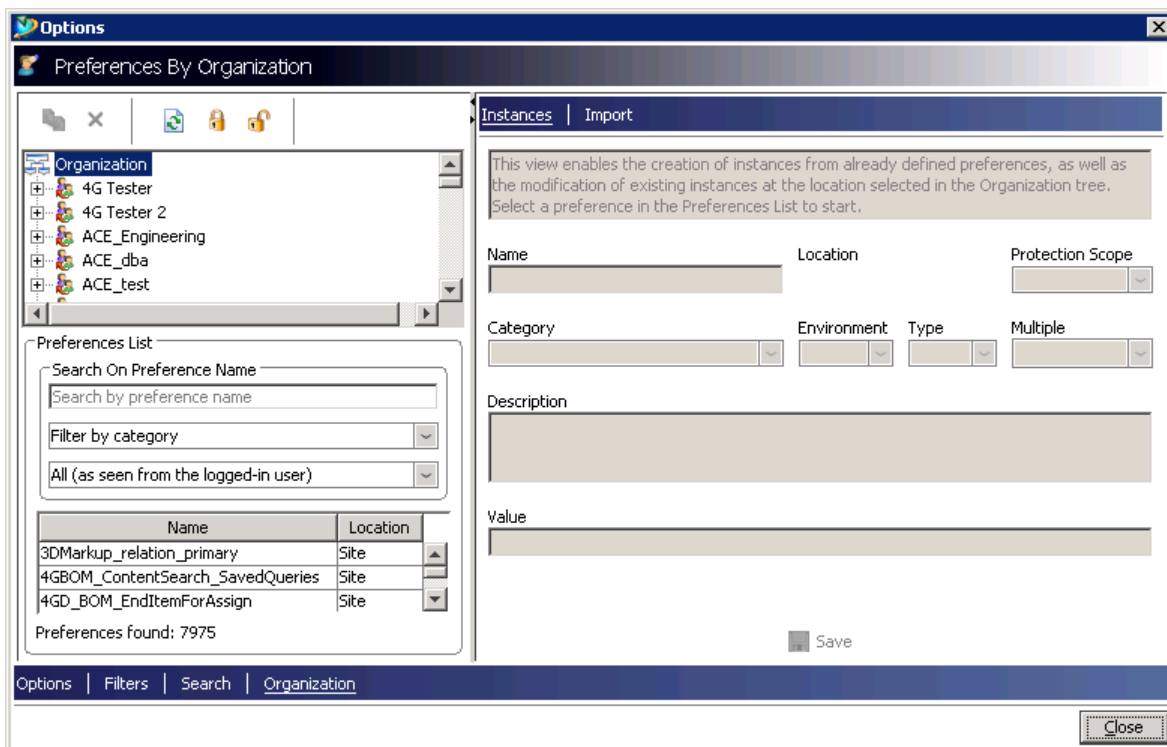
The **preferences_manager** supports batch operations and effective bulk processing.

1. Make a copy of the preference XML file, for example, the **tc_preferences.xml** file.
2. Apply your changes using an XML editor.
3. Import the changes using the **preferences_manager** utility or the rich client **Options** dialog box.

For more information about the **preferences_manager** utility, see the *Teamcenter Utilities*.

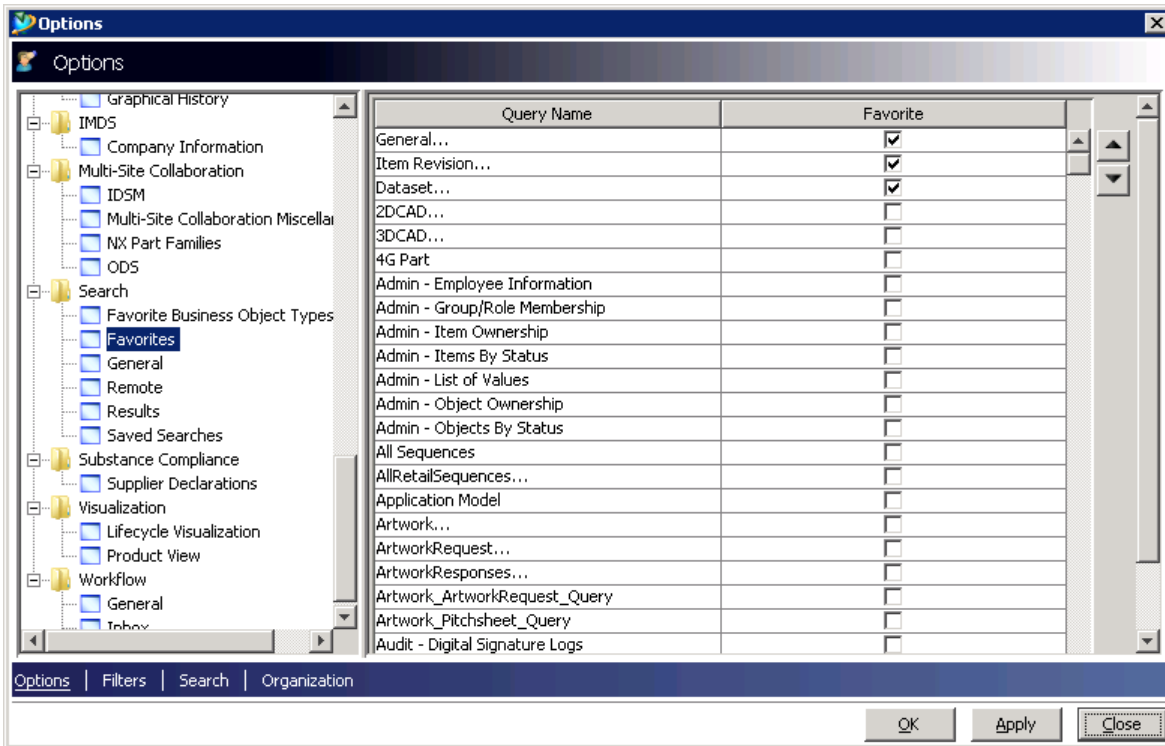
Working with preferences in the rich client

Choose **Edit**→**Options** to display the **Options** dialog box. The banner at the bottom of this dialog box contains tabs for the different pages: **Options**, **Filters**, **Search**, and **Organization**.



Viewing or modifying common user preference instances

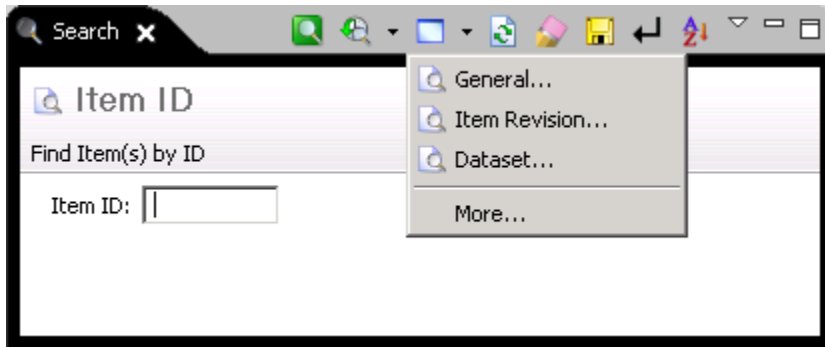
The **Options** page lets you interactively specify a wide range of behaviors by checking check boxes and entering values into fields. Each option in this page represents a preference. When you make changes, Teamcenter either changes the associated existing user preference, or creates it if it doesn't already exist.



To see the information about the associated preference, hover your mouse cursor over the option. This information is available even when the behavior is not available for editing. In this example, the **Search**→**Favorites** selection allows us to change the **QRYColumnsShownPref** preference. This controls which queries are shown in the advanced search list.

Query Name	Favorite
General...	<input checked="" type="checkbox"/>
Item Revision...	<input checked="" type="checkbox"/>
Dataset...	<input type="checkbox"/>
2DCAD...	<input type="checkbox"/>
3DCAD...	<input type="checkbox"/>
4G Part	<input type="checkbox"/>
Admin - Employee Information	<input type="checkbox"/>
Admin - Group/Role Membership	<input type="checkbox"/>
Admin - Item Ownership	<input type="checkbox"/>
Admin - Items By Status	<input type="checkbox"/>

Preference name: QRYColumnsShownPref
Protection scope: User
Description:
Specifies the list of default (favorite) saved queries used for



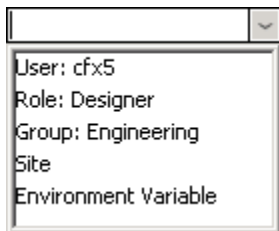
Preferences that affect display order may reorder values automatically when you create a user preference.

After you make your changes, click **OK** to save your changes and finish, or click **Apply** to save your changes and continue editing.

Viewing or modifying other preference instances

Use the **Filters** or **Search** pages to access group, role, and site preference instances, as well as user preference instances that are not available in the **Options** page's UI.

Optionally, use the **Filter by location** drop-down list to further filter the instances by location. The list is based on your current session information.



Preferences that define columns and column widths cannot be modified from the **Options** dialog box. These are interdependent preferences. When a column preference is modified, the corresponding column width preference must also be modified to ensure the table displays properly in Teamcenter. Interdependent preferences are most easily modified by right-clicking the **Properties** table in Teamcenter and choosing the **Insert columns** or **Remove this column** command.

Alternatively, you can modify these preferences using the **preferences_manager** utility or editing the preferences XML file.

Create new group or role preference instances

Depending on your dba or group administrator status, you will either see the entire organization or just a portion of it. Either way, use the organization chart to navigate to an available group, role, or user location to view or modify that location's existing preference instances or to create new ones.

dba	A dba can work with the entire organization structure for group, role, and user preferences.
Group administrator	A non-dba Group Administrator (GA) can only work with preference instances for their Group and any Roles it contains.
regular users	Any non-dba, non-GA user will see their user context options (groups and roles) and work with their own preferences instances.

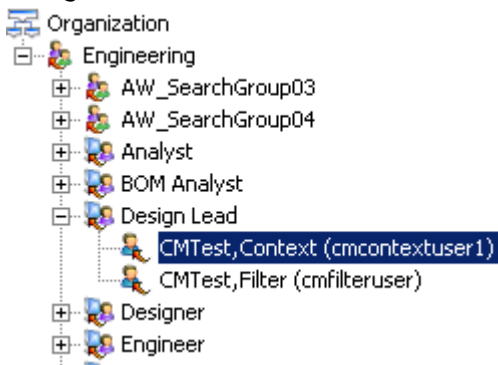
Tip:

The **Organization** window is interactive. When you select any node in the organization tree, preferences from all scopes are shown unless you manually selects a particular scope from the list. You may wish to use refresh to force the window to update based on your selection.

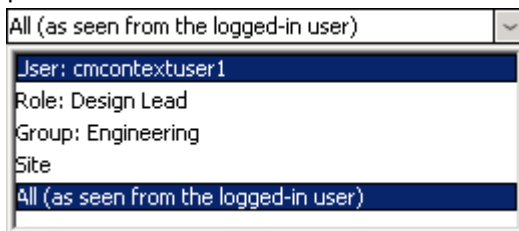
Example

You are the **Engineering** group administrator. You want to modify a *specific user's* default UI panel when they open **Edit**→**Options** to show the favorite search listing.

1. Navigate to their user location.



2. Optionally, select the drop-down value to filter preference instances to only show their user preferences.



3. Find the preference instance in the list and highlight it.

Name	Location
Fnd0HomeFolder_ColumnPreferences	User
Fnd0HomeFolder_ColumnWidthPreferences	User
HistoryIDList	User
HistoryTitleList	User
HistoryTypeList	User
ItemRevision_PseudoFolder	User
TC_Edit_Option_Startup_Panel	User

4. Make the change, and then click **Save**.

Instances | Import

The "Save" button will be enabled as soon as the value is modified.
Click on the "Delete" button to delete the selected instance.


Name	Location	Protection Scope
TC_Edit_Option_Startup_Panel	User: cmcontextuser1	User
Category	Environment Type	Multiple
General	Disable String	Single

Description

This is a user preference used to set default panel under Edit->Option->Options.

Value

newSearchFavorites

 Save

5. Make the change, and then click **Save**.

Instances | Import

The "Save" button will be enabled as soon as the value is modified.
Click on the "Delete" button to delete the selected instance.


Name	Location	Protection Scope
TC_Edit_Option_Startup_Panel	User: cmcontextuser1	User
Category	Environment Type	Multiple
General	Disable String	Single

Description

This is a user preference used to set default panel under Edit->Option->Options.

Value

newSearchFavorites

 Save

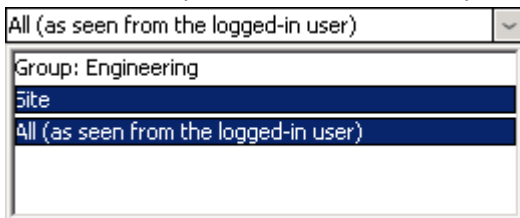
Example

You are the **Engineering** group administrator. You want to create a *group preference* for your users' default UI panel when they open **Edit**→**Options** to show the favorite search listing.

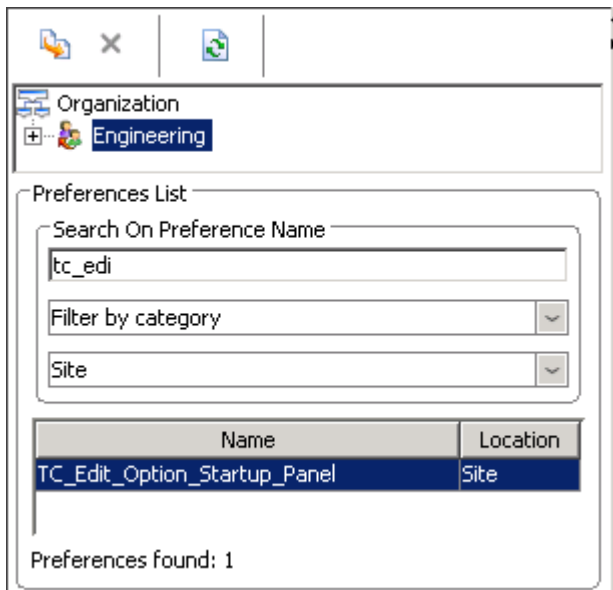
1. Navigate to your group location.




2. Select the drop-down value to filter preference instances to only show site preferences.



3. Use the **Search on Preference Name** to locate the site preference.



4. With the site preference highlighted, click the **Create new preference instance** button  to create a new instance at the highlighted location.
5. Change the value, and then click **Save**.

Instances | Import

Enter a value and click on the "Save" button to create a preference at the location selected in the Organization tree.

Name	Location	Protection Scope
TC_Edit_Option_Startup_Panel	Group: Engineering	User
Category	Environment Type	Multiple
General	sabled string	Single

Description

This is a user preference used to set default panel under Edit->Option->Options.

Value

newSearchFavorites

 Save

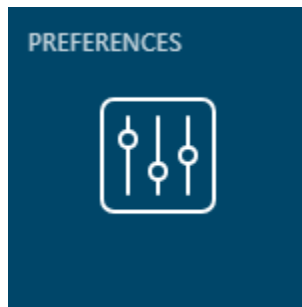
Working with preferences in Active Workspace

You can work with all Teamcenter preferences from within the Active Workspace client using the **Preferences** page.

Preference Management is part of the **Active Admin** installation option for Teamcenter. Once installed, you can get to this page by either:

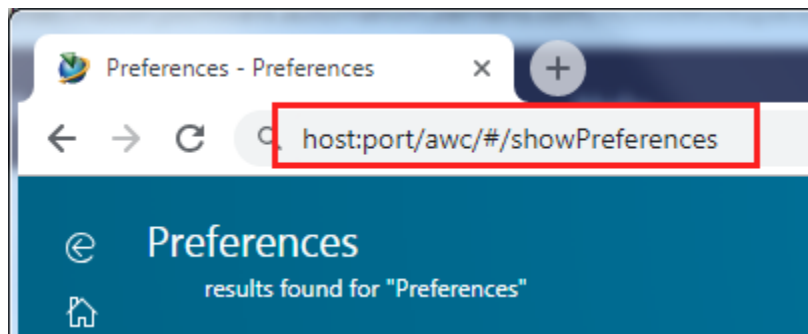
- Using the **PREFERENCES** tile from your home page.

By default, this tile appears in the home page of the **TcActiveAdminWorkspace** workspace.



- Navigate directly to the page with the `host:port/awc/#/showPreferences` URL.

This option is only available if your current workspace allows it.



What can I do with the preferences location?

Your ability to work with preferences is determined by whether you are currently logged in to a group with administrator privileges.

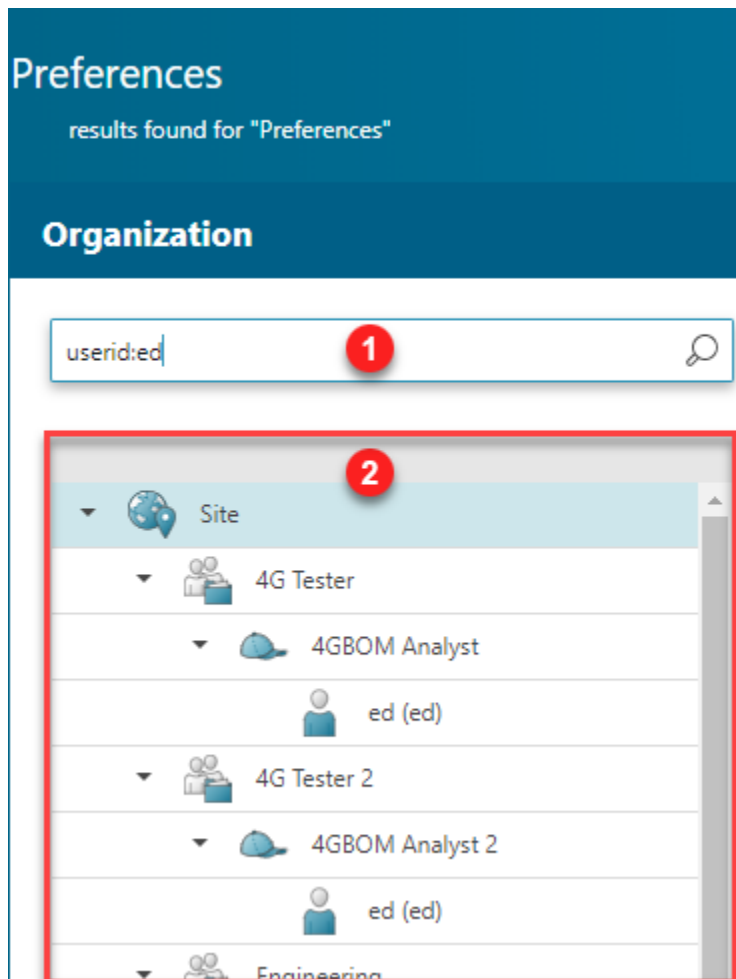
Administrator?	Permissions.
Administrator	Search and modify preferences Create and override site, system, group, role, and user preference instances

Administrator?	Permissions.
	Delete preference instances and definitions
Group Administrator	Search and modify preferences Create and override group, role, and user preference instances within your group
User	Search existing preferences Create and override your own user preference instances

The organization panel

Use the **Organization** panel to select in which session context you wish to work.

If you do not have a choice of working in other session contexts, (you have no administration privileges), then you will not see the **Organization** panel, and you can only work in your current session context.



1. (optional) Filter the organization list.

If you simply use text, the system will match within group, role, user name, or user id. If you use quotation marks, it will search for exact matches, if you don't it will append a wildcard to the end of your text. If you want to include spaces or commas in your search, you must use quotes.

You can narrow down the search by using the following prefixes:

- group:
- role:
- username:
- userid:

You can specify more than one of these by putting a space between them.

Example:

To search for the word, **design**, put `design` in the field.

To search for the specific user id, **ed**, put `userid:"ed"` in the field.

To search for all users with user ids beginning with **ed**, put `userid:ed` in the field.

To search for the specific user named **Smith, Bob** in roles beginning with **design**, put `username:"Smith, Bob" role:design` in the field.

2. Select which session context in which you wish to work.

If you select the site, you can only work with site locations.

If you select a group, you can work with that group's location overrides.

If you select a role, you can work with location overrides for that role and its group.

If you select a user, you can work with location overrides for that user, role, and group.

The preference list will be populated with all valid preference locations for the session context that you have selected, and you are able to:

- Modify the values of existing preference locations in the session context.
- Create new preference locations for the session context.
- Override preferences for this session context, if the preference scope allows it.

The preference list

The screenshot shows the Teamcenter Preferences interface. On the left, a list of preferences is displayed with columns for Name and Location. The preference 'AWC_ItemRevision.SUMMARYRENDERING' is selected. On the right, the details for this preference are shown, including its Name, Product Area, Description, Protection Scope, Environment, Location, Type, and Multiple Values. A search filter 'itemrevision.summaryrendering' is applied to the list. An 'Edit' button is visible at the bottom right of the details panel.

Name	Location
AWC_CPPackageItemRevision.SUMMARYRENDERI...	Site
AWC_CPTradelItemRevision.SUMMARYRENDERING	Site
AWC_Cdm0DataReqItemRevision.SUMMARYREND...	Site
AWC_ItemRevision.SUMMARYRENDERING	Site
AWC_Pdm1ProblemItemRevision.SUMMARYREND...	Site
AWC_mockTCAWAdminWorkspace.ItemRevision.S...	Site
AWC_mockTCAWAuthorWorkspace.ItemRevision.S...	Site
AWC_mockTCAWConsumerWorkspace.ItemRevisio...	Site
CPPackageItemRevision.SUMMARYRENDERING	Site
CPTradelItemRevision.SUMMARYRENDERING	Site
Cdm0DataReqItemRevision.SUMMARYRENDERING	Site

DEFINITION

Name: AWC_ItemRevision.SUMMARYRENDERING
 Product Area: * Active Workspace
 Description: * Registration of summary stylesheet for Item Revision objects in Active Workspace Client - This Preference Created by Mohan Elankuppan
 Protection Scope: * User
 Environment: * Disabled
 Location: Site
 Type: String
 Multiple Values: No

VALUES

Awp0ItemRevSummary

Edit

Select your working context in the **Organization** panel, if available.

1. (optional) Filter the preference list by category.
2. (optional) Filter listed preferences.
3. Select a preference.
4. View preference information.
5. (optional) Edit the value at this preference location.

If you do not have permission, you will not see this button.

Override a preference

To override a preference, you must create a new instance of the preference at a higher-precedence **location**. Each preference defines its own **scope**, which is the highest precedence location allowed.

For example, If a preference's scope is **Site**, then it cannot be overridden, but if its scope is **User** then it can be overridden at every level.

If a preference instance's location is **Site**, it will be overridden by any other location instance but if its location is **User** then it overrides any other location for that specific user.

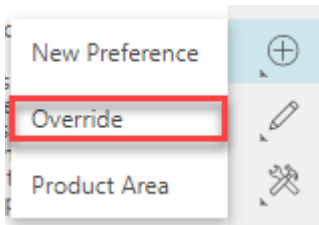
Tip:

If a preference in the list has a **location** of **None**, then that means it is the preference *definition* and there are no current location instances.

Following are the levels of precedence for locations.

	scope	location
User	Can override at any location.	Overrides all other location values.
Role	Can override at group and role locations.	Will override Site and Group location values.
Group	Can only override at group locations.	Will override Site location values.
Site	Can not override.	Is overridden by any other location

1. (optional) Filter the preference list.
2. Select the preference you want to override.
3. Open the **New** command stack \oplus , and then choose **Override**.



4. In the **Add Override** panel, choose the location for the override (if allowed), set the new value, and then choose **Add**.

What if preference names change when imported?

When importing preferences from the command-line, you may notice that in some cases the letters **ug** are automatically changed to **nx**. This is to assist in the conversion of older preferences. It does not matter if the original **ug** letters are uppercase, lowercase, or mixed case.

The replacement is all lowercase if the original is lowercase, but uppercase if either or both of the **ug** characters are uppercase.

This automatic conversion of **ug** occurs when any of the following criteria are met:

- When at the beginning of the preference name, followed by a special character.
- When preceded by a special character at the end of the preference name.
- When both preceded and followed by a special character in the middle of the preference name.

Special Characters

- `_` (underscore)
- `,` (comma)
- (space)
- `.` (period)
- `;` (semicolon)
- `+` (plus)
- `-` (minus)

Examples of automatic conversion

- `ug_preference` gets changed to `nx_preference`.
- `Preference_for_ug` gets changed to `Preference_for_nx`.
- `Preference_ug_setting` gets changed to `Preference_nx_setting`.
- `PreferenceForUg` does not get changed.

Specify dual OS values for a single preference

If you import preferences using the **preferences_manager** utility, you can define both Linux and Windows values for the same preference. To do so, you must set **array** to `false`, directing Teamcenter to return a single value for the preference query, even when multiple values are defined.

Note:

If you define both Linux and Windows values for a preference, the value returned is based on the server operating system.

1. Create an XML file containing the relevant preference definitions.

2. Set **array** to **false**.
3. Define **platform** values for both Linux (**UNIX**) and Windows (**WNT**). For example:

```
<preference name="TC_audit_log_dir" type="String" array="false"
  disabled="false">
  <preference_description>Specifies the audit log directory.
</preference_description>
  <context name="Teamcenter">
    <value platform="UNIX">$TC_LOG/audit</value>
    <value platform="WNT">%TC_LOG%\audit</value>
  </context>
</preference>
```

4. Import the XML file to the database with the **preferences_manager** utility using the **OVERRIDE** option.

For more information about this utility, see *Teamcenter Utilities*.

Tips for defining preferences

When defining preferences, please note the following:

Name

When entering the name of the preference, avoid the following characters:

,	comma
.	period
;	semicolon
+	plus
-	hyphen/minus
_	underscore

Type

Following are the five types of preference values:

- **String**

Valid values are any valid string of characters.

- **Logical**

Valid value is one of any logical pair (**on** or **off**, **true** or **false**, **yes** or **no**, **0** or **1**).

Note:

Logical preferences may have more than one valid value. For example, **0**, **No**, **Off**, and **False** may all be equivalent valid values of the same preference that achieve the same result. The value shown in the **Options** pane of the Options dialog box may differ from the possible values listed for a preference, but both values are valid settings.

- **Integer**

Valid values are any positive integer.

- **Double**

Valid values are floating point (real) numbers (**-12.34**, **99.05**).

- **Date**

Valid values are calendar date and time entries in *DD-MM-YYYY HH-MM-SS* format, for example, **23-Fe-2008 16-32-45**.

Note:

To ensure correct display of date format in Teamcenter, Siemens Digital Industries Software recommends users set values from the **Options** dialog box, rather than through the XML file.

Value

When referring to business objects, do not enter their localized name. Instead, use their database (real) name. For example, the **Import_Template_EXCLUDETYPES** preference refers to **Fnd0VisioTmpl** instead of **Visio Template**.

Definition | Instances | Category | Import | Export

Click on the "Edit" button to modify the definition and update any field in order for the "Save" button to be enabled. Note that the "Description" field must not be empty. Click on the "Save" button to save the definition of the existing preference.

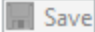
Name **Location** **Protection Scope**

Category **Environment** **Type** **Multiple**

Description

Defines the list of object types not to be displayed in the "Tools->Import->Templates" dialog. For a given value, its associated subtypes will also to be considered for the exclusion.

Values

 Edit  Save

Business Object : Fnd0VisioTmpl




Main | Properties | Operations | Display Rules | Deep Copy Rules | Alternate ID Rules »₂


Details


Project:


Name:

Display Name:

Storage Class:  [Fnd0VisioTmpl](#)

Parent:  [Fnd0DiagramTmpl](#)

Item Revision:  [Fnd0VisioTmplRevision](#)

Form:  [Fnd0VisioTmplMaster](#)